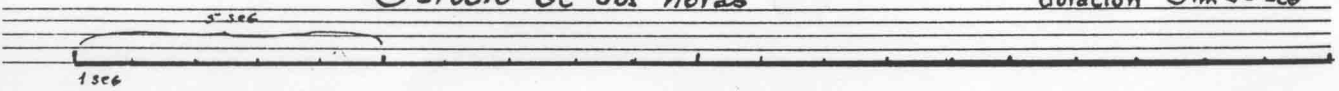


Estudio de dos notas

duración 3 m 30 seg



A musical staff with a treble clef. It contains three notes: a half note on the first line (G4), a half note on the second line (A4), and a half note on the second space (B4). The notes are marked with dynamic markings: "pp" under the first note, "p" under the second note, and "mp" under the third note. Above the staff, there are three horizontal lines with circles at their ends, corresponding to the notes below.

A musical staff with a bass clef. It contains three notes: a half note on the second space (G3), a half note on the second line (F3), and a half note on the first space (E3). The notes are marked with dynamic markings: "f" under the first note and "ff" under the second note. Above the staff, there are three horizontal lines with circles at their ends, corresponding to the notes below.

A musical staff with a bass clef. It contains three notes: a half note on the second space (G3), a half note on the second line (F3), and a half note on the first space (E3). The notes are marked with dynamic marking "mf" under the first note. Above the staff, there are three horizontal lines with circles at their ends, corresponding to the notes below.

A musical staff with a bass clef. It contains three notes: a half note on the second space (G3), a half note on the second line (F3), and a half note on the first space (E3). The notes are marked with dynamic marking "f" under the first note. Above the staff, there are three horizontal lines with circles at their ends, corresponding to the notes below.

A musical staff with a bass clef. It contains three notes: a half note on the second space (G3), a half note on the second line (F3), and a half note on the first space (E3). The notes are marked with dynamic marking "sff" under the first note. Above the staff, there are three horizontal lines with circles at their ends, corresponding to the notes below.

A musical staff with a bass clef. It contains three notes: a half note on the second space (G3), a half note on the second line (F3), and a half note on the first space (E3). The notes are marked with dynamic marking "f" under the first note. Above the staff, there are three horizontal lines with circles at their ends, corresponding to the notes below.

Handwritten musical notation on a single staff. It features a series of notes with dynamic markings: *>p<*, *>p<*, *>p<*, and *fff*. There are some blacked-out areas at the end of the staff.

Handwritten musical notation on a single staff. It includes notes with dynamic markings *ff* and *decrece* (with a dashed line). There are blacked-out areas at the beginning and middle of the staff.

Handwritten musical notation on a single staff. It features notes with dynamic markings *poco* and *a poco* (with a dashed line).

Handwritten musical notation on a single staff. It includes notes with dynamic markings *fff* and *decrece* (with a dashed line).

Handwritten musical notation on a single staff. It features a long horizontal line with the text *hasta desaparecer* (with a dashed line) below it.

Pedrolera, Firstman BS 999
Bass Synthesizer
Adrogué - 1987