

SAUDALGIA I

para guitarra amplificadora y computadora



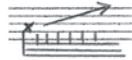
apoyar (suavemente) los dedos de la m. isq. contra las notas indicadas y tocar con m. derecha



apoyar el borde derecho de la m. derecha a la izquierda del puente



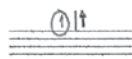
percutir con los dedos de la m. isq. contra la tastiera las notas indicadas



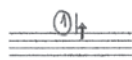
glissando



glissando tirando la cuerda hacia abajo



pisar las cuerdas indicadas con la m. isq. cerca del puente



pisar las cuerdas indicadas con la m. isq. cerca de la boca



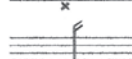
pisar las cuerdas indicadas con la m. isq. cerca de la tastiera



tambora: percusión con la m. derecha contra las cuerdas al lado del puente



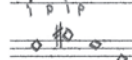
percusión con las uñas del dedo indicado contra el aro de la guitarra



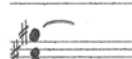
percusión con la mano abierta contra el aro de la guitarra



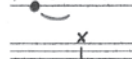
pizzicato alla Bartók



rasgueos con los dedos y en la dirección indicados



armónicos naturales, sonido de efecto



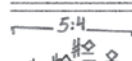
dejar vibrar



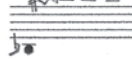
ataque junto a otro(s) instrumento(s)



melismas con rubato en caso que lo permita la velocidad



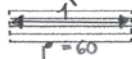
valores irregulares



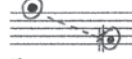
valores irregulares que se mantienen hasta una nueva indicación



lo mas rápido posible



indicador del tiempo en segundos



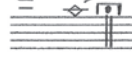
trayectoria espacial del sonido



diminuendo hasta desaparecer



número de la cuerda



pausa de 10 a 20 segundos

Amplificación: la guitarra amplificadora con un parlante en el escenario, la parte electrónica con 4 parlantes distribuidos en la sala.

Handwritten musical score for the first system. It consists of three staves: two for piano (treble and bass clef) and one for guitar (treble clef). The piano part includes dynamics such as *mp*, *mf*, *f*, and *molto vib.*. The guitar part features various chord diagrams and articulations like *mf*, *m.vib.*, and *f*. Time signatures *9:8*, *5:4*, and *6:4* are indicated. A large slur covers the right side of the system, with a *7:4* time signature written above it.

Handwritten musical score for the second system. It continues the piano and guitar parts from the first system. The piano part includes dynamics like *f*, *mp*, and *P*. The guitar part includes dynamics like *mf*, *f*, and *mp*. Time signatures *9:8* and *5:4* are present. The system concludes with a *9:8* time signature.

Handwritten musical score for the third system. It continues the piano and guitar parts. The piano part includes dynamics like *pp*, *mp*, *mf*, and *ppp*. The guitar part includes dynamics like *mf*, *ppp*, and *ppp*. Time signatures *9:8* and *5:4* are present. The system concludes with a *9:8* time signature. There are several annotations and markings, including circled numbers and a note that says "CXXVIII".

①
 P
 toliere la md
 e lascia vib

Handwritten musical score for the first system. It consists of five staves: two for piano (treble and bass clefs), one for guitar (treble clef), and two for bass (treble and bass clefs). The piano part includes dynamic markings such as *mf*, *f*, and *mp*. The guitar part features a guitar-specific notation with a circled '9.8' and a circled '2'. The bass part includes a circled '6' and a circled '5'. There are various handwritten annotations, including 'a.2.4', 'a.2.2', and 'gliss' with arrows. A large bracket spans across the piano and guitar staves, and another bracket is under the bass staves.

Handwritten musical score for the second system. It continues the five-staff arrangement. The piano part has dynamic markings like *ppp*, *pp*, and *mp*. The guitar part includes a circled '2' and a circled '4'. The bass part has a circled '5' and a circled '6'. There are handwritten notes such as 'p', 'mp', and 'f'. A circled '203' is written above the piano staff. A circled '2' is written above the guitar staff. A circled '5' is written above the bass staff. There are also some handwritten notes like 'pami pami' and 'pami pami pami p' under the guitar staff.

Handwritten musical score for the third system. It continues the five-staff arrangement. A handwritten note at the top reads: "modificaciones electronicas (ej: filtro, stack, reverse, decay, etc) duracion". Below this, there are numerical values: 450, 500, 500, 800, 80, 200, 500, 500, 50. The piano part has dynamic markings like *pppp*, *mf*, *pp*, *pp*, *mf*, and *f*. The guitar part includes a circled '3' and a circled '5'. The bass part has a circled '3' and a circled '5'. There are various handwritten annotations, including 'mp sempre', 'p', and 'f'. A circled '2' is written above the piano staff. A circled '5' is written above the guitar staff. A circled '3' is written above the bass staff. There are also some handwritten notes like 'i o m i m' and 'pami pami' under the guitar staff.

Handwritten musical score for guitar and piano, first system. The guitar part features a 9-measure arpeggiated figure at the beginning, followed by various chordal textures and melodic lines. The piano part includes dynamic markings such as *mp*, *sf*, *mf*, *p*, and *imp*, along with a 5-measure arpeggiated figure. The system concludes with a *pp* marking.

Handwritten musical score for guitar and piano, second system. The guitar part continues with complex textures, including a 9-measure arpeggiated figure. The piano part features dynamic markings like *mp*, *f*, and *mp*, and includes a section marked *sf* with the instruction "a los tirando la cuerda!".

Handwritten musical score for guitar and piano, third system. The guitar part is marked "Tango." and includes a 6-measure arpeggiated figure. The piano part includes dynamic markings like *mp*, *sf*, and *mp*, and features a section marked "Bossa Nova." with a 5-measure arpeggiated figure and the instruction "(5 sempre)".

con risonancia

mp ***** comp

9:8

P.M.P.

clair veloce

ff con dolore sempre crescendo

P.M.P.

P.M.P. P.M.P.

System 1: A three-staff musical score. The top two staves are for a string quartet, and the bottom staff is for piano. The piano part begins with a dynamic marking of *mp* and the instruction "Lasciare vibrare sempre". The score includes various musical notations such as notes, rests, and slurs, with circled numbers 1, 2, and 3 indicating specific points of interest or fingerings.

System 2: A three-staff musical score. The piano part includes the instruction "cresc. --- poco a poco". A trill is marked with a 'T' above it. The score features complex rhythmic patterns and fingerings, with circled numbers 1, 2, 3, and 4. A trill diagram is shown in a vertical box.

System 3: A three-staff musical score. The piano part includes the instruction "decresc. --- poco a poco". A trill is marked with a 'T' above it. The score features complex rhythmic patterns and fingerings, with circled numbers 1, 2, and 3. A trill diagram is shown in a vertical box.

Handwritten musical score for the first system. It consists of three staves: two for guitar (top) and one for piano (bottom). The guitar part includes a trill (T) and a box of chords. The piano part includes a trill (T) and a box of chords. The score is marked with dynamics such as *p*, *mf*, and *cresc*. There are several circled numbers (1, 2, 3) with arrows pointing to specific notes or chords, indicating fingerings or articulation points.

Handwritten musical score for the second system. It consists of three staves: two for guitar (top) and one for piano (bottom). The guitar part includes a trill (T) and a box of chords. The piano part includes a trill (T) and a box of chords. The score is marked with dynamics such as *mp* and *ff*. There are several circled numbers (1, 2, 3) with arrows pointing to specific notes or chords, indicating fingerings or articulation points. The word *Tanuco.* is written above the piano part.

Handwritten musical score for the third system. It consists of three staves: two for guitar (top) and one for piano (bottom). The guitar part includes a trill (T) and a box of chords. The piano part includes a trill (T) and a box of chords. The score is marked with dynamics such as *mp* and *p*. There are several circled numbers (1, 2, 3) with arrows pointing to specific notes or chords, indicating fingerings or articulation points.

1

mp

Reverb

2

mp

Reverb

3

mp

Reverb

Handwritten musical score system 1, consisting of three staves. The top staff features a treble clef and contains a complex sequence of notes with various annotations, including a circled '8' with an upward arrow and a circled '5:4'. The middle staff has a bass clef and contains notes with a circled '3' and an upward arrow. The bottom staff has a bass clef and contains notes with dynamic markings 'mf' and 'f', and a circled '2' with an upward arrow. A 'P' marking is also present.

Handwritten musical score system 2, consisting of three staves. The top staff has a treble clef and contains notes with a circled '3' and an upward arrow, and a circled '4' with an upward arrow. The middle staff has a bass clef and contains notes with a circled '3' and an upward arrow, and a circled '4' with an upward arrow. The bottom staff has a bass clef and contains notes with a circled '3' and an upward arrow, and a circled '4' with an upward arrow. A 'CII' marking is present.

Handwritten musical score system 3, consisting of three staves. The top staff has a treble clef and contains notes with a circled '3' and an upward arrow, and a circled '4' with an upward arrow. The middle staff has a bass clef and contains notes with a circled '3' and an upward arrow, and a circled '4' with an upward arrow. The bottom staff has a bass clef and contains notes with a circled '3' and an upward arrow, and a circled '4' with an upward arrow. A 'CII' marking is present.

Handwritten musical score for the first system. It consists of three staves: two for guitar and one for bass. The guitar staves contain complex chord diagrams and melodic lines with various annotations including *mp*, *mf*, and *p*. The bass staff shows a melodic line with a *mf* dynamic marking and a *p* marking. There are also some handwritten notes like '11B' and '11A' near the guitar staves.

Handwritten musical score for the second system. It consists of three staves: two for guitar and one for bass. The guitar staves feature chord diagrams and melodic lines with dynamic markings like *f* and *mp*. The bass staff has a melodic line with a *f* dynamic marking. There are also some handwritten notes like '1' and '2' near the guitar staves.

Handwritten musical score for the third system. It consists of three staves: two for guitar and one for bass. The guitar staves feature chord diagrams and melodic lines with annotations like *6:4*, *bossa nova*, and *sul pont*. The bass staff has a melodic line with a *mf* dynamic marking. There are also some handwritten notes like 'T' and 'arco' near the guitar staves.

Reverb

Handwritten musical score for the first system, measures 1-2. The score is written on three staves: guitar (top), bass (middle), and piano (bottom). The guitar staff has a 'T' box above it and 'imp' below. The bass staff has 'bassa' and 'tango' markings. The piano staff has 'mf' and 'CII' markings. A 7:4 ratio is indicated above the guitar staff. The music includes various chords and melodic lines.

Handwritten musical score for the second system, measures 3-4. The score is written on three staves: guitar (top), bass (middle), and piano (bottom). The guitar staff has a 'T' box above it and 'mp' below. The bass staff has 'mp' and 'CII' markings. The piano staff has 'mf' and 'CII' markings. A 5:4 ratio is indicated above the guitar staff. The music includes various chords and melodic lines.

Handwritten musical score for the third system, measures 5-6. The score is written on three staves: guitar (top), bass (middle), and piano (bottom). The guitar staff has a 'T' box above it and 'mp' below. The bass staff has 'bassa' and 'mp' markings. The piano staff has 'mf' and 'CII' markings. A 5:4 ratio is indicated above the guitar staff. The music includes various chords and melodic lines.

1

mp 1 3 2

① ↑ ② ↑

2

T

mf mp

CIV CII

① ↑ ② ↑ ③ ↑

3

T

mf mp

CIV

① ↑ ② ↑ ③ ↑

Reverb -----

mf mp

System 1 of a musical score. It features a grand staff with piano and violin parts. The piano part includes several chords marked with a 'T' and dynamic markings of *mf* and *mp*. The violin part has three numbered bowing directions: ① ↑, ② ↑, and ③ ↑. A large slur covers the first two measures. The system concludes with a *P* (piano) dynamic marking.

System 2 of the musical score. It continues the piano and violin parts. The piano part has chords marked with 'T' and dynamics of *mf* and *mp*. The violin part includes bowing directions ① ↑, ② ↑, and ③ ↑. A large slur covers the first two measures. The system ends with a *P* dynamic marking.

System 3 of the musical score. The piano part features chords marked with 'T' and dynamics of *mp* and *mf*. The violin part has bowing directions ① ↑, ② ↑, and ③ ↑. A large slur covers the first two measures. The system concludes with a *morendo* instruction and a dashed arrow pointing right, labeled 'Reverb'. The piano part ends with a *mf* dynamic marking.

System 1 of a musical score. It features five staves: two for the upper strings (Violin I and Violin II), two for the lower strings (Viola and Cello/Double Bass), and a grand staff for the piano. The piano part includes a guitar-like texture with fretted notes and a 'rasgueo' section. Time signatures are indicated as 6:4, 5:4, 6:4, and 8:4. Dynamics include *mf* and *f*. There are various musical notations such as slurs, accents, and articulation marks.

System 2 of the musical score. It continues the five-staff arrangement. The piano part features a section labeled 'libero accelerando' with a rhythmic pattern of notes. There are 'clis' markings above the strings. Time signatures include 5:4, 6:4, 7:4, and 6:4. Dynamics include *mf* and *f*. The 'rasgueo' section is also present.

System 3 of the musical score. It continues the five-staff arrangement. The piano part includes a 'rasgueo' section. Time signatures include 5:4, 4:4, and 5:4. Dynamics include *mf*. There are 'clis' markings and various musical notations throughout the system.

Handwritten musical score system 1. It features a grand staff with treble and bass clefs. The upper staves contain complex rhythmic patterns with diamond-shaped notes and dashed lines. The lower staves contain a melodic line with notes and rests. Performance markings include *mf*, *rit.*, and *ritard.*. A sequence of circled numbers (2, 1, 3) is written above a group of notes. A hand icon is present below the staff.

Handwritten musical score system 2. It features a grand staff with treble and bass clefs. The upper staves contain complex rhythmic patterns with diamond-shaped notes and dashed lines. The lower staves contain a melodic line with notes and rests. Performance markings include *ritard.*, *rit.*, *ritard.*, and *rit.*. A sequence of circled numbers (2, 1, 3) is written above a group of notes. A hand icon is present below the staff. The word *cantando* is written below the staff.

Handwritten musical score system 3. It features a grand staff with treble and bass clefs. The upper staves contain complex rhythmic patterns with diamond-shaped notes and dashed lines. The lower staves contain a melodic line with notes and rests. Performance markings include *ritard.*, *rit.*, *ritard.*, and *rit.*. A sequence of circled numbers (2, 1, 3) is written above a group of notes. A hand icon is present below the staff.

5:4 6:4

Handwritten musical score system 1. It features a grand staff with treble and bass clefs. The top two staves contain melodic lines with diamond-shaped ornaments and slurs. The bottom two staves contain a piano accompaniment with chords and a bass line. Dynamic markings include *mf* and *mp*. A piano diagram with arrows and the notation 'P216UEO' is present. A sequence of numbers '1 2 3 4 1 2 3 4' is written above the bass line.

7:4 6:4 5:4 6:4 5:4

Handwritten musical score system 2. It continues the piece with similar notation to system 1. The piano part includes a diagram with arrows and the notation 'P216UEO'. A sequence of circled numbers '1 2 3 4 1 2 3 4' is written above the bass line.

6:4 7:4 8:8 5:4

Handwritten musical score system 3. It continues the piece with similar notation to system 1. The piano part includes a diagram with arrows and the notation 'P216UEO'. A sequence of numbers '1 3 4 1 2 4 1 2' is written above the bass line.

Handwritten musical score for the first system. It consists of two systems of staves. The top system has four staves: two for piano (treble and bass clefs) and two for guitar (treble and bass clefs). The bottom system has two staves: a single treble clef staff and a grand staff (treble and bass clefs). The piano part includes dynamic markings such as *mf* and *mp*, and performance instructions like *clavé*. The guitar part includes fretboard diagrams with fingerings (e.g., 4 2 1 4 3 4 2 1) and techniques like *rasgueo*. Time signatures *4:4*, *6:4*, and *7:4* are indicated above the staves. Hand-drawn arrows and circles connect notes between staves, indicating cross-staff relationships.

Handwritten musical score for the second system, continuing the piece. It follows the same four-staff piano/guitar system and two-staff piano system layout. The piano part features more complex rhythmic patterns and dynamic markings like *mp*. The guitar part includes *rasgueo* markings and fretboard diagrams with fingerings such as 3 4 1 2 4-4. Time signatures *5:4*, *4:4*, *6:4*, *7:4*, and *5:4* are used. The notation is dense with many notes and rests, and includes various performance markings like *sf* and *p*.

Handwritten musical score for the third system, concluding the page. It maintains the same structural layout. The piano part includes dynamic markings like *mf* and *mp*. The guitar part features *rasgueo* markings and fretboard diagrams with fingerings like 4 3 1 4 2 2. Time signatures *6:4*, *7:4*, *6:4*, *7:4*, and *6:4* are present. The notation is highly detailed with many notes, rests, and performance markings such as *mf* and *mp*.

Handwritten musical score for guitar, first system. It features a treble clef staff with melodic lines and a bass clef staff with guitar-specific notation including fret numbers, bar lines, and dynamic markings like "mf" and "rassucio". Time signatures include 6:4, 7:4, and 6:4. There are various annotations such as circled numbers and hand diagrams.

Handwritten musical score for guitar, second system. Similar to the first system, it shows melodic and guitar-specific notation. Time signatures include 6:4, 4:4, 6:4, and 8:4. Dynamic markings like "mf" and "ff" are present. Annotations include circled numbers and hand diagrams.

Handwritten musical score for guitar, third system. This system includes more complex guitar techniques and dynamic markings like "mp", "mf", and "fff". Time signatures include 7:4, 6:4, 5:4, 8:8, 5:4, and 8:8. Annotations include circled numbers and hand diagrams.

Lago de Como 1998.